

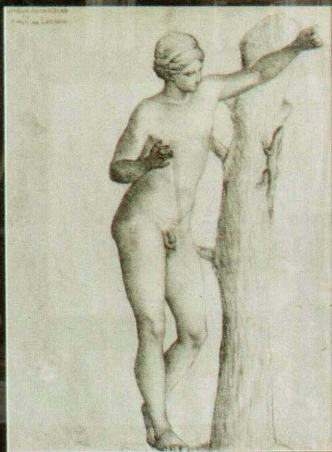
WINTER 2023

House Beautiful

SMALL SPACES

BRILLIANT WAYS TO LIVE LARGE

Austin-based
M. James Design Group
gives this Houston
pied-à-terre a luxe layer
of color and art.
P. 72



Furniture That
Instantly
Makes Any
Room Feel
Bigger
P. 22

\$6.99

02>

08458



0 273911 5

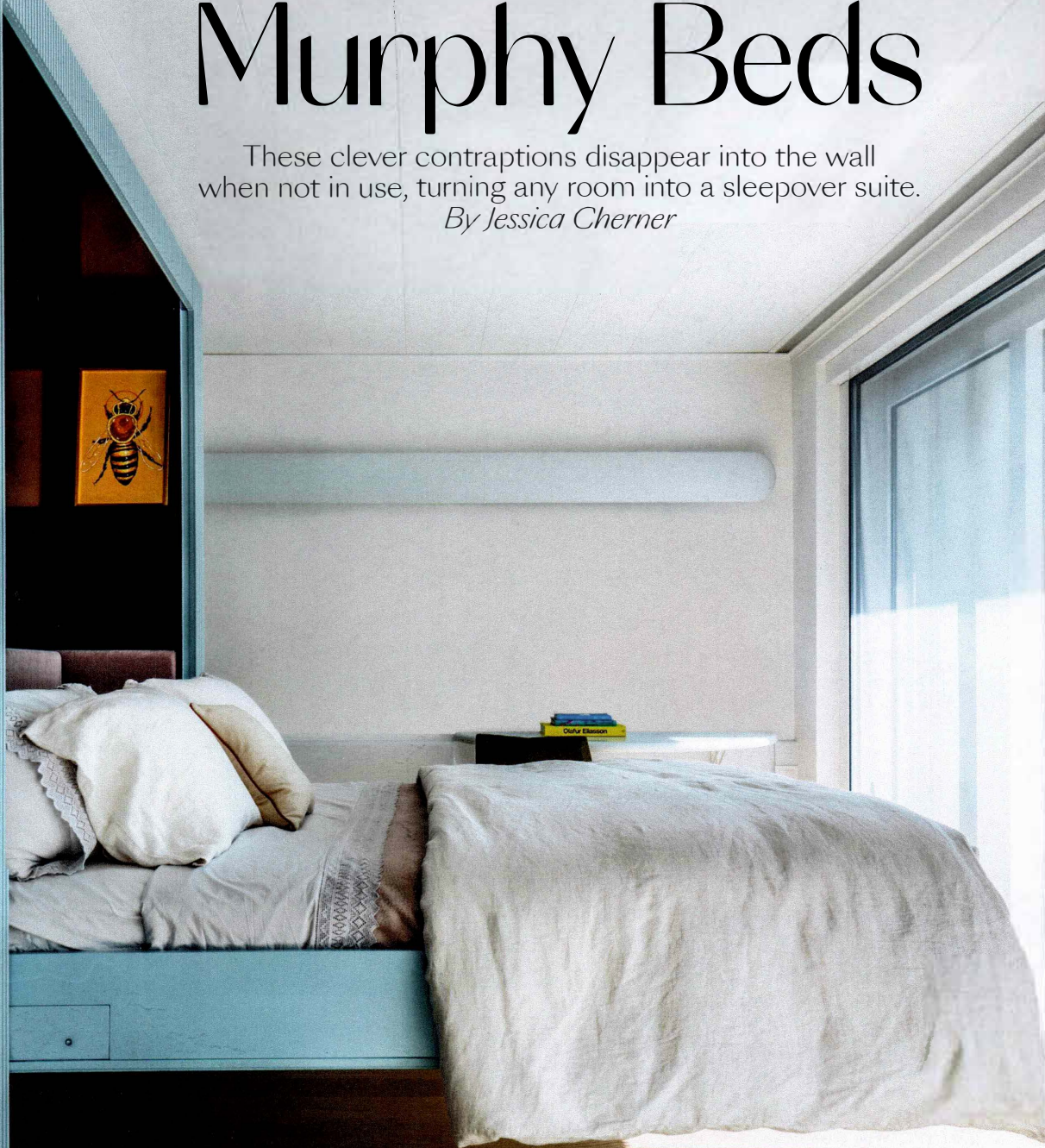
JEWEL BOXES OF ALL KINDS:
Cozy Attics, Reading Nooks,
Powder Rooms

+ more!

The Definitive Guide to Murphy Beds

These clever contraptions disappear into the wall when not in use, turning any room into a sleepover suite.

By Jessica Cherner



For the living room aboard a yacht, MKCA cofounder Michael Chen added a custom Murphy in striking powder blue.

W

HETHER YOU HAVE A CRAMPED APARTMENT OR A HOUSE THAT'S SHORT

a guest bedroom, sometimes you need to manifest sleeping quarters out of thin air. Or, on the flip side, what if you could reclaim the space being taken up by a bed and use it for a home gym or office? Enter the Murphy bed, the fold-down wall bed patented by William Lawrence Murphy that gained popularity in the 1920s. The first iterations were purely functional, but these days, some of the world's most renowned architects and designers are incorporating them into their high-end spaces. **"It's one compact piece that can turn your bedroom into an office, or anything else, and back in seconds,"** explains Jennifer Jones, principal designer of Niche Interiors. Read on for tons of ideas and learn how to get one in your own home.



Sideways Storage

Jones stretched the limits of this bonus room with a twin-size Murphy bed that tilts out on its side. Surrounding storage holds books and curiosities, and a hidden light allows guests to read in bed. When the bed folds up during the day, the room turns back into a home office and creative studio.

Clever Cabinet

Designer Neal Beckstedt got creative in a New York City studio too small to fit even a pullout sofa. He designed a full Murphy bed that folds flush with the cabinets, clearing up the walkway for "easy access to the adjoining bathroom," he says.



Roll-Out Mattress

Though not technically a Murphy bed, this Japanese-style sleeping mat that General Assembly designers Sarah Zames and Colin Stief added to a Brooklyn home rolls right out. "Cleverly efficient, its placement beneath the built-in desk capitalizes on available spatial real estate in the room versus something like a trundle or a pullout sofa," says Zames.



CONSIDER CUSTOMIZATION

If you have a tricky space, work with an architect, contractor, or carpenter to create a solution. It's pricey—expect to spend upwards of \$8,000—but it's far cheaper than building a whole new room. Also, "Customizing provides the most flexibility, allowing every inch to be utilized," says Jones.

